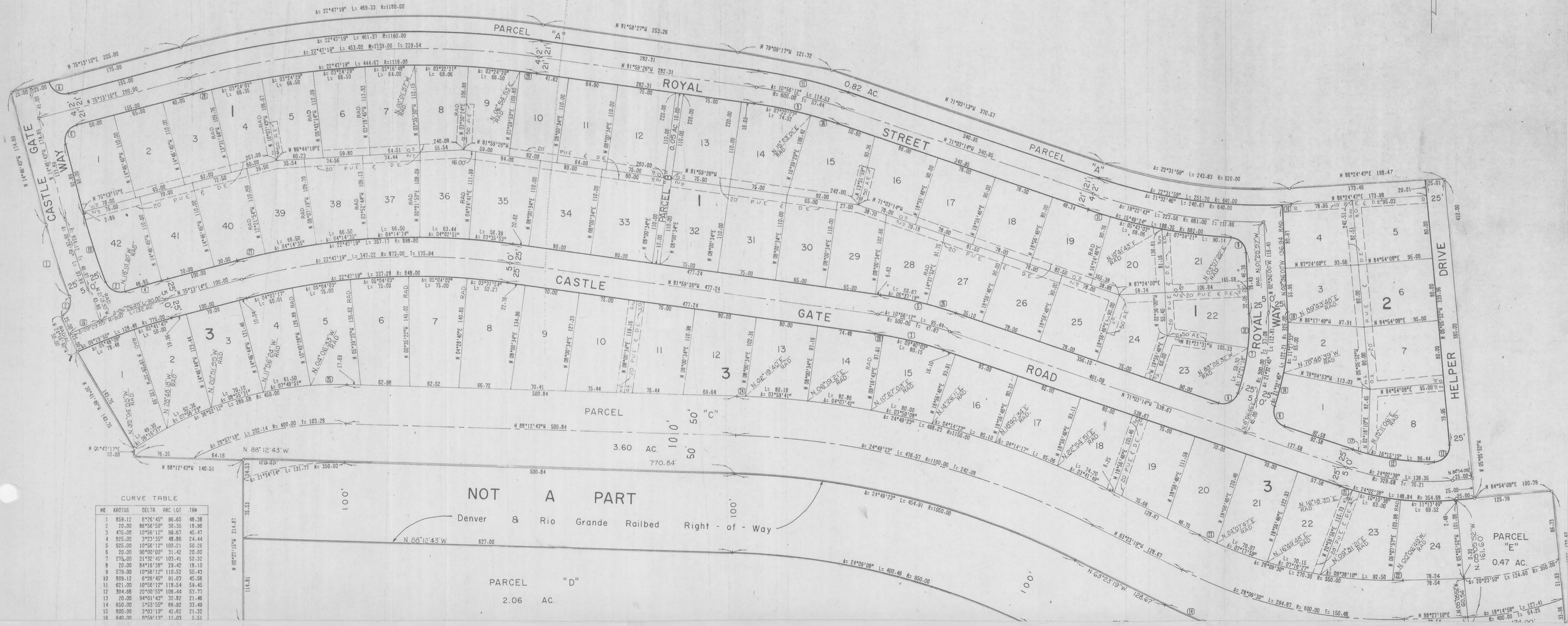


CASTLE GATE ADDITION

Entry No. 13152
 Indexed ✓
 Abstracted ✓
 Rec. Fee \$42.00

STATE OF UTAH } SS
 COUNTY OF CARBON }
 FILED AND RECORDED FOR
 TRICO UTAH, INC.
 JUN 17 4 27 PM '74
 BOOK 3 OF PLATS
 PAGE 131
 ANN O'BRIEN
 COUNTY RECORDER

SCALE 1" = 60'



CURVE TABLE

NO	RADIUS	DELTA	ARC LGT	TAN
1	859.12	6°26'45"	96.65	48.38
2	20.00	88°58'50"	30.35	18.96
3	475.00	10°58'12"	90.67	45.47
4	825.00	3°23'35"	48.86	24.44
5	525.00	10°58'12"	100.21	50.26
6	20.00	90°00'00"	31.42	20.00
7	275.00	21°32'45"	103.41	52.32
8	20.00	84°16'38"	29.42	18.10
9	579.00	10°58'12"	110.52	55.43
10	809.12	6°26'45"	91.03	45.56
11	621.00	10°58'12"	118.54	59.45
12	304.88	23°00'55"	106.44	53.71
13	20.00	94°01'43"	32.82	21.46
14	650.00	5°53'55"	66.92	33.49
15	800.00	3°03'10"	42.62	21.32
16	640.00	0°59'13"	11.03	5.51

NOT A PART
 Denver & Rio Grande Railbed Right-of-Way
 PARCEL "D"
 2.06 AC.